



WLI WATERFALL

The highest waterfall of West Africa

A must-visit natural phenomenon, located only 36 kilometers away from Kpando. The approximately 300 meters high Wli waterfall is characterized by being the highest one in Ghana, and even in the whole of West-Africa. Located in the Agumatsa Wildlife Sanctuary, this trip is a perfect escape from the busy streets.



Emo Foundation
The path to Wisdom and Knowledge

Hiking level



Type of hike

Calm

Bring along

Bathing suit, towel and water

Budget

Approx. 30 cedis

Total time

Approx. 3 hours

Best time to visit

Any time



Agumatsa Wildlife Sanctuary

Tip: This trip is perfect to combine with a stop at Lipke Todome Caves, Afadjato Mountain, Wli Todzi or Tagbo Falls. All within reasonable distance.

Emo Foundation

The path to Wisdom and Knowledge

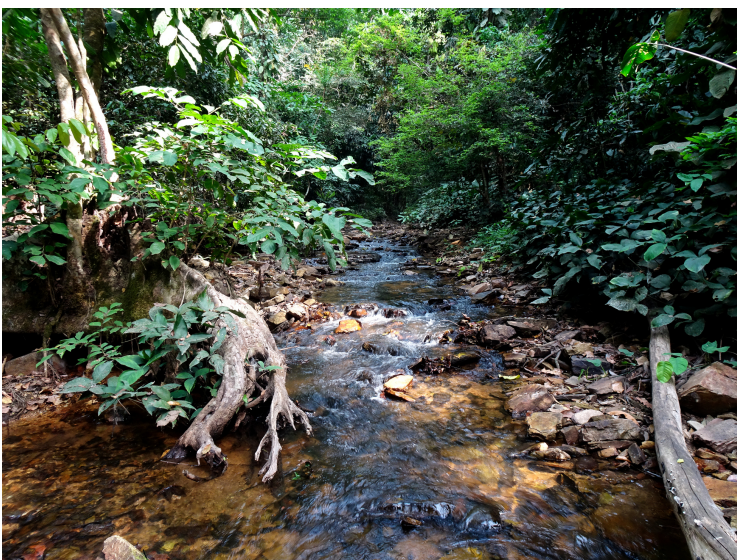
WHAT'S IN A NAME?

The upper and lower waterfalls are named the Wli waterfalls (pronounced as *Vlee*). Diving deeper into the meaning of the name, the Ewe language beautifully titled the waterfalls as Agumatsa Falls: *Allow me to flow*. Besides seeing the impressive waterfall, you'll notice plenty of birds enjoying this source of life. The sanctuary counts about 200 different bird species and 400 butterfly species.

In the past, the falls have been identified with a different name. When the independence of the Republic of Ghana took place, the falls were named after one of the children of Ghana's first President. Known as the Samia Falls at the time, President Nkrumah owned his own lodge nearby the falls until his governance was overthrown in 1966.

THE TRAILS

Those who prefer a relaxed trip can choose for a tranquil hike going through the Agumatsa Wildlife Sanctuary reaching the lower falls. There, you'll be able to swim and see the fall from its bottom. This route is mostly flat and doesn't require too much energy. For the more adventurous ones, another route through the sanctuary is available. The journey to the upper falls takes up about 40 minutes and will offer a view from the up-top. There are several routes available, but keep in mind that these are not accessible when it has recently rained. You can also consider a hike from the Upper falls to Wli village along with the range.



SPIRITUALITY

The Wli waterfalls were of spiritual and cultural importance for the neighboring communities. The falls are considered to be sacred, as it holds a protecting spirit. For the population, the water helped the women cure for being unfruitful. Every five days a priest will offer prayers at this holy place, and on Easter special rituals are hold.

GETTING THERE

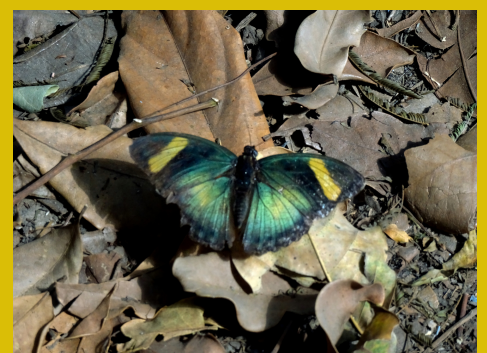
Motorbike
Taxi
Tuktuk from Kpandu

SLEEPOVER

Waterfall Lodge
German owned guesthouse, offering chalets and a camping site. Along with a terrace and great views over the falls and mountains

Wli Water Heights Hotel
A clean and comfortable accommodation, offering bar and restaurant as well

Big Foot Safari
Accommodation with higher standard, offering bar and restaurant as well



Emo Foundation

The path to Wisdom and Knowledge